

The Cardinal

OCTOBER NOVEMBER 2009 • WWW.SAINTPAULAUDUBON.NET • SAINT PAUL AUDUBON SOCIETY

OCTOBER MEMBER MEETING

Minnesota's Auduboners — Do We Walk the Talk?

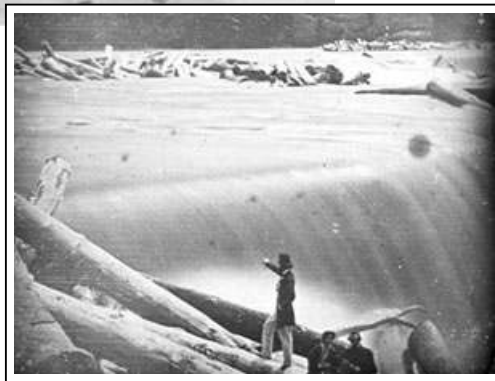
With Don Arnosti, Institute for
Agriculture and Trade Policy

October 8, 2009

Minnesota's Auduboners work long and hard on environmental issues, but what is the real impact of our efforts? We pride ourselves on our environmental consciousness and push for good laws at the local, state and federal level, but are these effective?

Don Arnosti will look at the legislation Audubon has worked for over the past several years and analyze whether we're heading in the right direction and doing the right things. What will be the overall impact of the new sales tax funding on the environment? How about climate change and the whole cap-and-trade approach? He will also discuss biofuels, renewable energy and the issue of indirect land use affecting tropical forests.

Arnosti is familiar to many from his years as director of Audubon Minnesota and his work with the Minnesota Environmental Partnership before taking his present position with the Institute for Agriculture and Trade Policy's Forestry Program.



ST. ANTHONY
FALLS, 1850.

NOVEMBER MEMBER MEETING

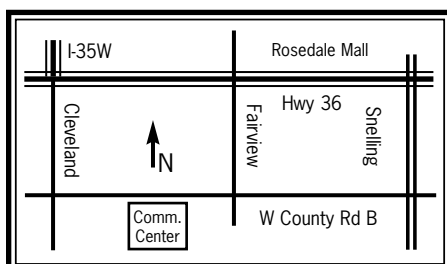
Treasures of the Lost Gorge with Mike Davis, DNR River Ecologist

November 12, 2009

Mike Davis dreams about what might happen if dams on the Mississippi River in the metro area were modified or removed, as is happening on rivers in other parts of the country.

"The six or seven miles of rapids below St. Anthony Falls once provided spectacular scenery and critical habitat for fish, native mussels and birds," says Davis. Water quality has improved enough in the impoundment area below St. Paul's Ford Dam that federally endangered mussels are being reintroduced there. Following huge expenditures of public money to clean up the Mississippi, Davis thinks it's time to start planning the future of the river's gorge.

Commercial navigation is declining, while the potential for recreational uses is very high, he says. Davis, a one-time commercial fisherman on the river, sees the value of a study of the economic impact of various present and future uses of the gorge.



Our meetings begin at 6:45 with social time, 7:00 PM for the program, at the Fairview Community Center, 1910 W. County Road B, in Roseville. Free and open to the public. Free parking available. *Bring a friend!*

Member Meetings
December 10
Birds of the Peruvian Amazon
January 14
**The Mississippi River:
Flyway & Highway**

LEADER ROSTER; PRESIDENT'S MESSAGE

BOARD MEETINGS

Saint Paul Audubon's Board Meetings are held at the Ramsey-Washington Metro Watershed District Office at 2665 Noel Drive, Little Canada. Exit 35-E at Little Canada Rd., go east to Noel, across from City Hall. For more information or regrets, please contact Tim Nixon at 651-353-0756 or timothy.nixon@thomsonreuters.com. Fall meetings are on the first Monday of the month: **October 5**, and **November 2**, and **December 7**.

VOLUNTEERS NEEDED

Programs Chair

It's the proverbial, perennial problem... or... Opportunity! The chapter enjoys great success with the **Member Meetings**, but we currently need some help on putting them in place for next year... The Chapter needs to find a person from within who enjoys sleuthing for new programs. This may include attending other chapters' and organization's talks, searching through speaker bureau lists for interesting folks from our area, keeping up with current events and issues, and looking ahead to what the 'next' green energy environmental, birding, and conservation goals will be. Our chapter is known for putting on 'forefront' programs. Help us plan them!

Interested persons may contact president Tim Nixon, at 651-353-0756 or timothynixon@thomsonreuters.com

CARDINAL CONTRIBUTORS

Thanks to Val Cunningham, Chase Davies, Tim Nixon, Holly Peirson, Bonnie Sample, Julian Sellers, Steve Zis, for their contributions to *The Cardinal*. Send submissions to the Editor at hpbirdscouter@msn.com

Business as Usual?!

Because there are no board and membership meetings during summer months, I assumed things quieted down from June through August. I was mistaken! I'd like to take a few moments in this issue of "The Cardinal" to highlight some exciting recent Chapter activity!

New Website On Sept. 1, 2009, <http://www.saintpaulaudubon.org/> launched! The site has a beautiful look and feel, and is the end product of a many-months' long team effort led by **Jenny Vitale**, and including **Val Cunningham, Chase Davies, Bonita Jenne, Holly Peirson, and Julian Sellers**. The site provides a compelling new platform for our core message on how to build a community that values and protects birds and the natural environment.

I encourage you to visit it soon, and to share the site with others! (Note: This launch takes SPAS back to using .org instead of .net; another advantage!)

New Native Plant Booklet Coming soon, the Chapter will be making available a new booklet about native plants which attract insects that are important to birds. The SPAS Conservation Committee is working to produce this booklet, and the plants have been very carefully selected because they are appropriate for the St. Paul climate, and because they will help us begin to bring new ecological balance and restoration home to our urban landscapes. In addition, we hope to be able to offer our members "starter packets" of native seeds for these plants. These seed packets could

SAINT PAUL AUDUBON

President	651-353-0756 (c)
Tim Nixon	timothy.nixon@thomsonreuters.com
Vice President	651-738-8310
John O'Connell	john-sharon-oconnell@att.net
Treasurer	651-340-3487
Richard Newmark	ranemark@yahoo.com
Secretary	651-292-0004
Tess Rizzardi	mjbryand@qwest.net
Programs Chair open	
Conservat'n Co-Chr Val Cunningham	651-645-5230 writers2@comcast.net
Conservat'n Co-Chr Susan Solterman	651-260-7040 (c)
Field Trips Chair Chase Davies	651-633-1663 ccdavies@aol.com
Education Chair Steve Johnson	651-776-0104 csrockclimb@yahoo.com
Membership Chair John O'Connell	651-738-8310 john-sharon-oconnell@att.net
Newsletter Editor Holly Peirson	651-464-6743 hpbirdscouter@msn.com
Newsletter Mailing Jane Schuler	651-644-5338
Chapter Phone	651-291-2596

(Outgoing Message Only — take down numbers given to call for info)

Audubon Minnesota 651-739-9332
www.mn.audubon.org

ABOUT OUR CHAPTER

Founded in 1945 as the 'St. Paul Bird Club' with around 12 members, Saint Paul Audubon Society now serves the entire East Metro region of the Twin Cities area, and has around 2,400 members. We hold 9 Member Meetings a year. Feel free to contact anyone listed at left for more information, or write to Saint Paul Audubon Society at PO Box 7275, Saint Paul, Minnesota, 55107 or visit our website at www.saintpaulaudubon.net

ABOUT OUR NEWSLETTER

The Cardinal is published 6 times a year. Articles are due on the 5th of January, March, May, July, Sept, and Nov. Submissions are subject to editing. Send copy to hpbirdscouter@msn.com

LOCAL SUPPORT

If you are an Audubon member and don't live in the Saint Paul area, but would like to receive *The Cardinal*, send \$15 for a year's subscription to John O'Connell, 2184 Larry Ho Drive, St. Paul, MN 55119

ADDRESS CHANGE

Please call 1-800-274-4201 to change your address for National Audubon Society mailings, including *Audubon Magazine* and *The Cardinal*, or to sign up for Audubon's paper-free renewal program.

National Audubon Society
www.audubon.org

FIELD TRIPS & OTHER HAPPENINGS

then be used to establish a small plot in a member's or friend's garden.

New Partnership Ron Windingstad from Audubon Minnesota, Dan McGuiness, former SPAS President and founder of Dan McGuiness & Associates (habitat restoration), and Troy Meacham from Landcraft Seed and Services (native seed provider and consultant), have begun a habitat restoration project at the 200-acre corporate campus of Thomson Reuters (my employer) in Eagan. Several employee volunteer teams are also at work: The "Bluebirds and Beyond" team is working with Ron to maintain 20 bluebird nesting boxes, and on the addition of chimney swift and purple martin nesting sites, while the "Native Prairie Seed" team and the "Habitat Restoration" team will begin work this fall to remove a large amount of invasive sweet



Goldfinch

Tim Nixon

clover and spotted knapweed, and re-plant with native prairie grass and forbs. This is an exciting new partnership across non-profit and private sectors, and it holds promise for helping Saint Paul Audubon to share our core message and inspire our values in young professionals in our community.

What's more, our new website arrived just in time to help with outreach to many of these new Volunteers!

Tim Nixon, President

FIELD TRIPS

Sparrows Plus

Saturday, October 17TH

Woods, fields, and bluffs overlook the big bend of the Mississippi called Spring Lake, west of Hastings. We'll hike through the Spring Lake Park archery range preserve, and visit the Schaar's Bluff area. This is great bird habitat, and the remaining fall foliage will enhance the experience. We hope to find migrant sparrows, including White-crowned, White-throated, and Fox – with luck maybe a Harris's – plus raptors, thrushes, and other songbirds.

Difficulty Easy (but a lot of walking)

Carpool 7:30 AM, SW corner of Sears (I-94 and Marion St) or meet at archery range at 8:00.

Leader Julian Sellers
651-698-5737
juliansellers@msn.com

Crex Meadows Sandhill Crane Tour

Saturday, October 17TH
4:00 PM to After Sunset

Crex Meadows offers van tours of the Greater Sandhill Crane gathering during October. Chase Davies will accompany St. Paul Audubon Society folks on this experience of targeted birding (focus is on one or two species), an evening tour to view a spectacle well worth the drive.

Meet Chase at 4:00 PM at the Crex Meadows Wildlife Education Center, 102 East Crex Ave, Grantsburg WI 54840. We will discuss "why is Crex" and talk about cranes in general prior to going out into the field in vans with Crex Staff to tell us about this particular population. Chase worked for many years to educate young and old about Lesser and Greater Sandhill Cranes in Nebraska, and has searched out other crane populations in the U.S.

Allow 1.5 hrs' travel time to Crex. Figure out food needs, and dress for temperatures that are guaranteed to

cool as the evening progresses. Bring a scope if you can; also consider a camera since the marshes are spectacular in fall.

Registration: Each individual or group must register one week in advance to Crex Meadows with \$5.00 payment by phone, mail or email. Tell them you are with SPAS so Chase can learn how many folks to watch for. Phone: 715-463-2739 or www.crexmeadows.org.

Difficulty: Easy (climbing in and out of vans several times)

Leader: Chase Davies, 651-633-1663
ccdavies@aol.com (email or call only if you need additional information)

Tundra Swan Bus Tour

Saturday, November 14TH

What is the special draw about this section of the Mississippi River that gets these magnificent birds to visit for the month of November?

Join St. Paul Audubon field trip leader Chase Davies on this special DNR Tour to visit popular swan way-stations. Why stop here? Where did they spend the summer? Why don't we see them in springtime?

This is a DNR-guided and interpreted school bus tour to Alma, WI and Brownsville, MN to view Tundra Swans. A variety of diving and dabbling ducks will lengthen the day's checklist. Chase has led this trip many times. She will help the SPAS group with duck ID and other topics of interest. Bring snacks and a spotting scope if you can.

Carpool Option: Meet at 6:00 AM at SW corner of Sears lot, I-94 & Marion Street, St. Paul. We will catch a fast food breakfast in Rochester and decide about supper later.

Leader: Chase Davies for St. Paul Audubon. 651-633-1663, ccdavies@aol.com (Email or call only if you need additional information)

Registration: Please Register by November 8TH to 507-452-2272. Fee of about \$20 per person includes a bag lunch. Upon registering you will learn where to meet in Winona.

Difficulty: Easy. A long day with long driving distances in car and school bus.

SPAS BUTTERFLY CENSUS, JULY 2009



DEAN HANSEN AND DOROTHY WALTZ: A GREAT TEAM



**Scenes from
this year's
Butterfly
Census**

ALL PHOTOS
GENEROUSLY PROVIDED
BY CONNIE BERGSTED



HAPPENINGS + NATURE NOTE FROM SPAS MEMBER

Field Trips and Happenings continued from p. 3

Get a Front Row Seat at the MOU Paper Session

Saturday, December 5TH

But you might have to give up your seat if there's still coffee to serve... It's "our year" to make and serve the coffee and snacks during the breaks at the Minnesota Ornithologists' Union's Annual Paper Session. Three Twin Cities Chapters rotate this opportunity: our Chapter, the Minneapolis Chapter, and the Minnesota River Valley Chapter (Bloomington.)

Don't worry, you'll get your seat back for most of the day... And it's a lot of fun to meet and greet others in the Birding and Conservation-minded community. Five to six volunteers are needed; if you would like to help with this effort, please contact Chase Davies at 651-633-1663 or ccdavies@aol.com

Christmas Bird Count

Saturday, December 19TH

Make your plans now to participate in the 110TH Christmas Bird Count. It's not too early to call or Email Julian to reserve your place. We need birders of all skill levels to make the most of this premier citizen science event. Our count circle extends 7.5 miles in all directions from the intersection of County Road B and Dale Street. You can join a team in the field or keep an eye on your feeders at home (if you're within the circle). Mark your calendar now.

Compiler Julian Sellers
651-698-5737
juliansellers@msn.com

Wolverine in My Yard

Well not actually. It's close cousin, the Fisher, is much more likely. These secretive, solitary mammals have recently been spotted in the Twin Cities metro area. When I called the DNR to discuss my sightings, I was surprised to hear fishers had been reported "as close by" as Lino Lakes. I had news for the DNR: I have observed them in Roseville and St. Paul as well!

Fishers are valued for their beautiful fur and have been trapped to extinction on the east coast. They are now being re-introduced to many east coast states.

My first observation was several years ago along the Pierce Butler route near the Midway area, around dusk. I was driving slowly around a curve and noticed a dog-sized animal running along the street in a wooded area. I noticed it "pranced" as it ran, had a quite a bushy tail and a head like a weasel. It startled me because I could not immediately recognize what I was seeing. It was not a raccoon, too tall to be a skunk, and it wasn't a coyote or dog. The only thing I could think of at the time was – well, it looked like a wolverine. My quest for answers began there.

More recently I was walking late one evening along a rather busy road in Roseville when up ahead under a street light a similar animal quickly pranced across four lanes of traffic from one wooded area to another, and stood waiting and looking back



across the street. I froze and observed as another of its kind came following after it. Once again they had all the physical markings of a wolverine, only much smaller in size. The pair then entered into a wooded patch near a small pond. I continued to walk past and could hear them snarling visiously at each other in the thicket. Assuming they were mates, there was absolutely no love lost. The hour was late. It was spooky.

It's interesting to note that plenty of homes with backyards were nearby, as well as several businesses. The next day I reported my sightings to the Minnesota DNR.

A note to all those with backyards that back up to woody areas: the next time you hear the rumble of a trash-can overturning in the night or the dog barking incessantly at 2:00 AM; switch on the back-porch light and you just might catch a glimpse of something closely related to the notorious wolverine.

BY SPAS MEMBER STEVE ZIS

Notable Butterflies and Birds seen during the NABA Census pictured on p. 4 were:

Tiger Swallowtail, Great Spangled Fritillary, Aphrodite Fritillary, Baltimore Checkerspot, Mourning Cloak, Little Wood Satyr, Co. Ringlet, Co. Wood Nymph, Monarch, *Northern Cloudywing Skipper*, European Skipper.

Co. Loon, Great Blue Heron, Great Egret, Trumpeter Swan, Red-tailed Hawk, Osprey, Northern Flicker, Black-capped Chickadee, House Wren, Grey Catbird, Co. Yellowthroat, Clay-colored Sparrow, Field Sparrow.

CONSERVATION / EDUCATION: MANX SHEARWATER

Historic Fledging of Manx Shearwater

Matinicus Rock, Maine

September 15, 2009 – On Tuesday September 8TH, biologists visiting Matinicus Rock, an island off the coast of Maine, discovered a fledgling-aged Manx Shearwater. While shearwaters were first observed on the island twelve years ago, this is the first time that a Manx Shearwater chick is known to have reached fledging age in the United States. The young bird was found by a team of Audubon and U.S. Fish and Wildlife Service Researchers as they checked suspected Manx burrows on the 22-acre island, which holds the distinction of being Maine's most diverse seabird nesting island.

Matinicus Rock is part of the Maine Coastal Islands National Wildlife Refuge and is cooperatively managed by the National Audubon Society's Seabird Restoration Program and the Refuge. The island was also the site, earlier this year, of the first eastern U.S. nesting of Common Murres in more than 100 years.

Audubon workers discovered the chick in a relatively shallow burrow – one of six on the island. Upon first examination the shearwater appeared to be an adult - but a closer look revealed remnant patches of fluffy light gray down around the legs - proof that this was a nearly-fledged chick.

"The young shearwater had a healthy appearance and perfect plumage as it nibbled on the U.S. Fish and Wildlife patch on my sleeve," according to Brian Benedict.

The team had waited patiently until the end of the 2009 nesting season to check the burrows, in order to avoid disturbing the shearwaters during the 120 days a pair needs to hatch and raise a chick to fledging. Because of this, they could have easily missed this historic event if they had checked the burrows even a few days later.

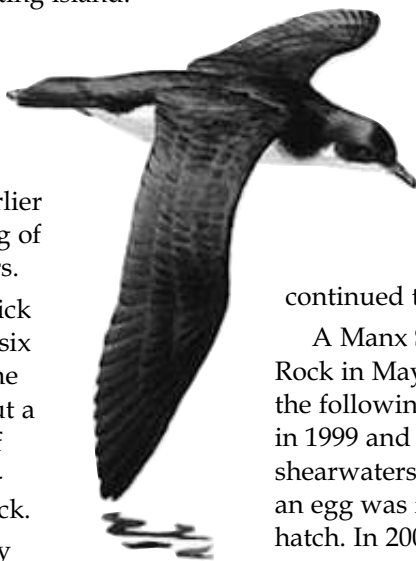
"This is what we all work and hope for," said Stephen Kress, director of Audubon's Seabird Restoration Program, "This successful nesting provides further

evidence of the health of the Gulf of Maine and demonstrates how Audubon's and the U.S. Fish and Wildlife Service's long term collaborative efforts are helping seabirds to thrive."

Manx Shearwaters (*Puffinus puffinus*) nest throughout the eastern North Atlantic, especially in Great Britain. These crow-sized albatross relatives have a wingspan of nearly three feet, and are named for their habit of flying low over the water. Studies in Britain indicate that they may live 56 years and travel over five million miles during their long lives. Regular visitors to the western North Atlantic since the 1950's, their breeding was first confirmed in 1973 when a pair produced a chick on Penikese Island in Buzzard's Bay, Massachusetts, but the outcome of this nesting was not confirmed. In 1977, a second North American and first Canadian breeding record was confirmed on Middle Lawn Island in Newfoundland. The species is not known to have nested in the United States since 1973, but a small population has continued to nest on Middle Lawn Island.

A Manx Shearwater was first observed on Matinicus Rock in May 1997 and a nesting burrow was discovered the following year. Two Manx were seen briefly together in 1999 and appeared regularly in 2000. From 2001-2004, shearwaters used the burrow on multiple occasions and an egg was found in the burrow in 2005, but it failed to hatch. In 2006 and 2007, up to 19 Manx Shearwaters were seen around the island. In 2008, a new burrow was found, and visiting adults were documented with an infrared camera, but breeding was not confirmed. Several adjacent burrows were discovered later in 2008. It was in one of these burrows that the fledgling was discovered.

Seabirds nesting on Matinicus Rock and other Maine seabird colonies are dependent on ample supplies of fish such as Atlantic herring and white hake, which they feed to their young. Despite the unusually wet summer, 2009 appears to have been a banner year for both Atlantic herring and Maine seabirds.



Rare Blue Parrot Back from the Brink of Extinction

The Lear's Macaw, a striking blue parrot found in NE Brazil, has been down-listed from Critically Endangered (the highest threat category) to Endangered as a direct result of conservation action. The current population is estimated to be around 960 birds, up from fewer than 100 in 1989. To save this bird, partnerships between conservation organizations in the U.S. and Brazil have worked together to preserve over 4,000 acres of habitat in eastern central Brazil. Since purchasing the land, organizations have focused on stopping illegal trapping and transportation, and protecting the nesting and roosting sites. The plan now calls for reforestation, which includes helping landowners protect young saplings from goats. If you are interested in helping fund this effort, go to the American Bird Conservancy's website at www.abcbirds.org.

THE LAST PAGE

★ Electronic Resources

'you gotta bookmark these sites!'

Saint Paul Audubon's website is at:

www.saintpaulaudubon.net (Member Meetings, Field Trips, Conservation, Education, "Cardinal" archives)

Audubon Minnesota is at **www.mn.audubon.org**

National Audubon Society is at: **www.audubon.org** (birds & science, issues & action, education, Audubon at home, state centers & chapters, environmental news)

Minnesota DNR is at **www.dnr.state.mn.us** or call 651-296-6157 or 888-MINNDNR (Info on State Parks, State Forests, Wildlife Mgmt Areas, Scientific & Natural Areas, bird lists, wildlife info)

National Wildlife Refuges in MN can be found at **www.fws.gov/midwest** (click on "Minnesota")

National Parks in USA & MN can be found at **www.nps.gov** (w/clickable map)

Minnesota Ornithologists' Union is at www.mou.mn.org (birding listserves, migration and nesting occurrence maps, State Park bird lists, RBA (Rare Bird Alert) reports, all 87 county bird lists, seasonal reports, etc.)

Minnesota's Rare Bird Hotlines are:

Metro/Statewide 763-780-8890

Duluth/No. Shore 218-728-5030

Northwestern MN 1-800-433-1888

Ramsey County & Saint Paul Audubon have collaborated to publish "A Guide to Birding Ramsey County." Find it online at:

<http://www.co.ramsey.mn.us/parks/NaturalResources/BirdingInRamseyCounty.htm>

Northwest MN's Pine to Prairie Birding Trail website is at **www.mnbirdtrail.com**

The Minnesota River Valley Birding Trail is at **www.birdingtrail.org**

Mississippi River from Itasca to Iowa, the Great River Birding Trail, is at **www.greatriverbirding.org**

MNBirdNet Statewide Electronic Bird Club, is at: **mnbird-request@linux2.winona.msus.edu**

Bob Ekblad's great list of events and MN Bird Checklist is at: **<http://home.rconnect.com/~ekblad/MN-Event.htm>**

Get Involved in saving/restoring habitat: Buy Duck Stamps! **<http://www.fws.gov/duckstamps/stamps.htm>**

New
& Revised

✧ Reaching Our Leaders

Washington, D.C.

President Obama
The White House, 1600 Pennsylvania Avenue
Washington, D.C. 20500, 202-456-1111
president@whitehouse.gov

US Senator Amy Klobuchar DC 202-224-3244, MN 612-727-5220
<http://klobuchar.senate.gov/emailamy.cfm>
Russell Senate Office Bldg, Washington DC 20510
MN: Federal Building, #298, Ft Snelling, MN 55111

US Senator Al Franken DC 202-224-5641, MN 651-221-1016
info@franken.senate.gov 320 Hart Senate Office Bldg,
Washington DC 20510

US Rep 4TH Betty McCollum DC 202-225-6631, 1029 Longworth
House Office Bldg, Washington, DC 20515;
MN 651-224-9191, 165 Western Avenue N, #17,
Saint Paul, MN 55102; Internet email:
www.house.gov/mccollum/contact.html

US Rep 5TH Keith Ellison DC 202-225-4755, MN 612-664-8000
1130 Longworth House Office Bldg, DC 20515
250 Marquette Avenue #225, MPLS, MN 55401
<http://ellison.house.gov>

US Rep 6TH Michelle Bachmann DC 202-225-2331, MN 651-
731-5400, 412 Cannon House Office Bldg, Wash,
DC 20515 MN: 6043 Hudson Rd #330, Woodbury, MN
55125 http://bachmann.house.gov/Email_zip.htm

Minnesota

Governor Tim Pawlenty 75 Rev. Martin Luther King, Jr Blvd,
#130, Saint Paul, MN 55155, 651-296-3391
Fax: 651-296-2089 tim.pawlenty@state.mn.us

MN Senators To find your senator, call the Secretary of State
651-296-0504, or go to www.senate.leg.state.mn.us

MN Reps To find your representative, call the MN House at
651-296-2146, or go to www.house.leg.state.mn.us

www.pwrc.usgs.gov/bpp/

90 years' worth of birders' notes go online

The U.S. Geological Survey's North American Phenology Program is putting 6 million personal observances of birds, weather, migration data, and etc. online. Some of this data dates back to 1880. All jotted down on 2x5 cards and stored in government filing cabinets. 1,200 volunteers are helping to transcribe that data, and YOU can be one of them! See p. 16 of the Sept/Oct issue of Audubon Magazine for more info, and use the URL above to volunteer!

SPAS' E-Alert!

If you have email, sign up today for our online notification system! You'll receive announcements about upcoming events, information about current legislative happenings, and other Saint Paul Audubon happenings between issues of *The Cardinal*. When you *change your email address*, notify list manager Chase Davies of your new address. She is at ccdavies@aol.com
You may unsubscribe at any time.

SAVE THIS DATE

Audubon Minnesota will hold it's Annual Meeting and Legislative Planning Session on November 14.
For more info, please go to the Audubon Minnesota website at <http://mn.audubon.org>

SAINT PAUL AUDUBON SOCIETY

PO Box 7275, St Paul, MN 55107-7275
WWW.SAINTPAULAUDUBON.NET

October November 2009

December January Deadline 11/5/2009

100% RECYCLED PAPER

Welcome... To the Saint Paul Audubon Society. We're a chapter of the National Audubon Society. Our Mission is to conserve and restore natural ecosystems, focusing on birds, other wildlife, and their habitats for the benefit of humanity and Earth's biological diversity.

CALENDAR

OCTOBER

Board Meeting5
Member Mtg: Don Arnosti8
Field Trip: Sparrows Plus. 17
Field Trip: Crex Meadows. 17

NOVEMBER

Board Meeting2
Member Mtg: Lost Miss. River12
Field Trip: Tundra Swans. 14
Audubon Minnesota's Annual Mtg14

Non-profit Organization
U.S. Postage
PAID
Permit # 3795
St. Paul, Minnesota

**Time Dated Material
ADDRESS SERVICE REQUESTED**

Volunteer Opportunity

The National Eagle Center in Wabasha Minnesota is actively recruiting new volunteers. It's a great opportunity to learn a lot about raptors and work closely with 4 Bald Eagles and 1 Golden Eagle. It also offers a chance to be involved with the Golden Eagle project. We are asking for a 1 year commitment and about 14 hours of volunteer time a month.

If you are interested in learning more, please send an email to Joan Schnabel at joanjeff@centurytel.net

St. Paul Audubon Society Local Sponsorship

Yes! I want to be a sponsor of my local chapter, Saint Paul Audubon, by donating \$15, for which I will receive *The Cardinal* newsletter and other online news. Please fill in the personal information, make a check for \$15 out to Saint Paul Audubon Society, and send it to the address below. *Thank You Very Much!*

- I'm a NEW member! Please send my Welcome Packet right away!
- I currently receive National's *Audubon Magazine*.

Name _____

Address _____

City _____ State _____ Zip _____

Please sign gift card: _____

Mail to: Saint Paul Audubon, c/o John O'Connell, 2184 Larry Ho Drive, St. Paul, MN 55119

National Audubon Society Membership C9ZM030Z

Yes! I will become a *new* member or give a *new* gift membership in the National Audubon Society. I will receive *Audubon Magazine* and Saint Paul Audubon's *The Cardinal* newsletter. Please fill in the form, make a check for \$20 out to National Audubon Society, and send it to the address below. *Thank You Very Much!*

Name _____

Address _____

City _____ State _____ Zip _____

Please sign gift card: _____

Mail to: National Audubon Society, P.O. Box 422250, Palm Coast, FL 32142-2250
(Write on envelope: "Attention: New Membership — please process immediately")